



WE CAN learn and practice
LEAVE NO TRACE

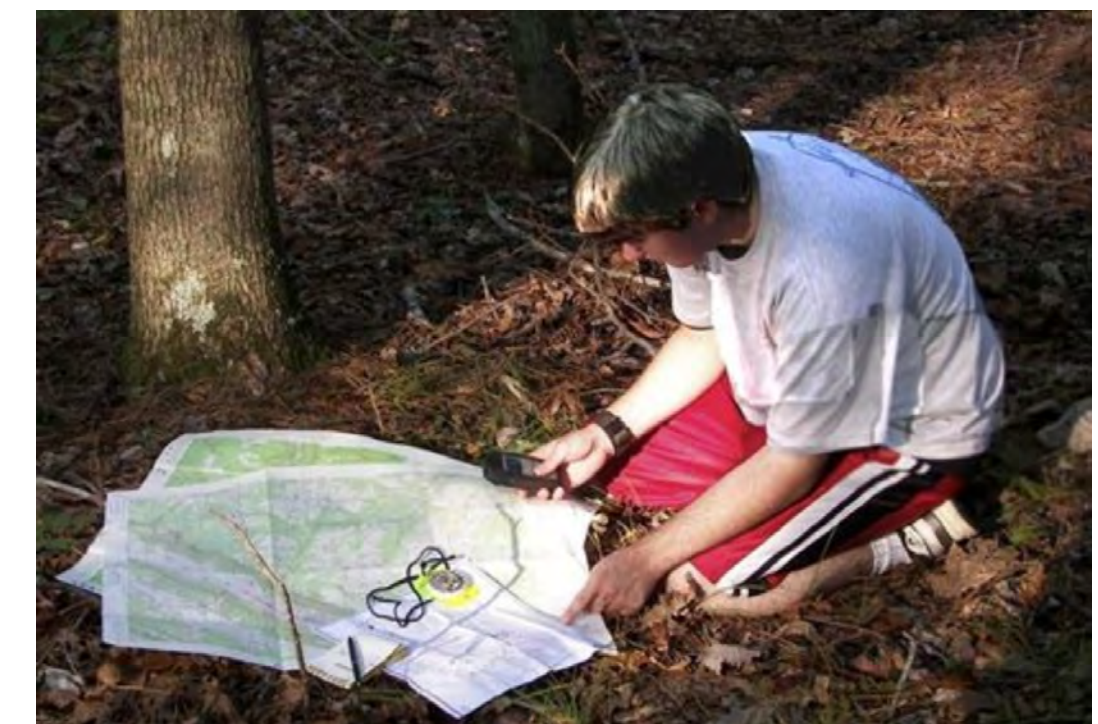
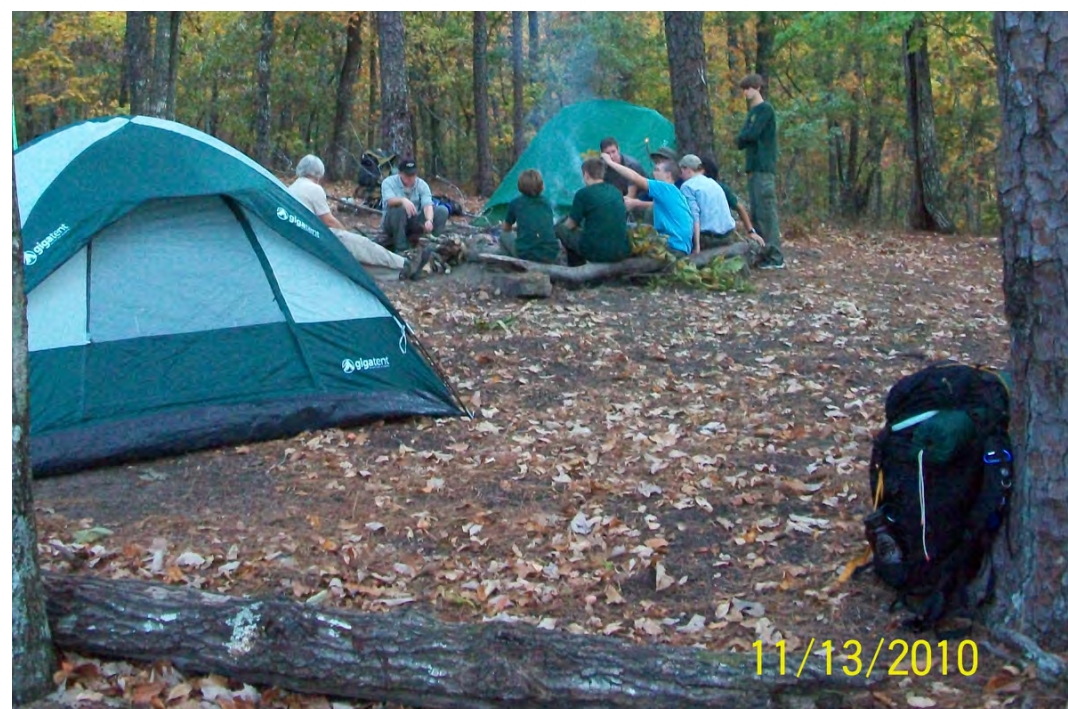


**LEAVE
NO TRACE**

Plan Ahead and Prepare



- Know the regulations, policies, and rules for the area you plan to visit
- "Be Prepared" for extreme weather, hazards, and emergencies
- Visit in small groups when possible
- Have the skills and equipment needed for your chosen activity
- Choose an appropriate outing for your group



Know Before You Go

Travel and Camp on Durable Ground

- Durable ground includes rock, gravel, dry grasses, and snow
- Good campsites are found not made
- Protect wet areas, camp at least 200ft or 70m from lakes & streams
- Leave your campsite as you found it



- In popular areas:
Use established trails, tracts, and campsites
Walk in the middle of the trail

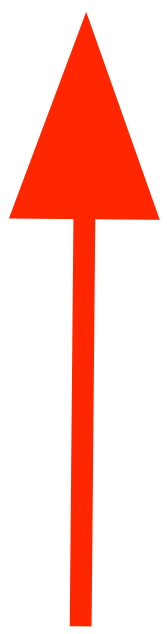


- In remote areas:
Disperse use, prevent the creation of new trails, tracts or campsites
Avoid areas where impacts are beginning

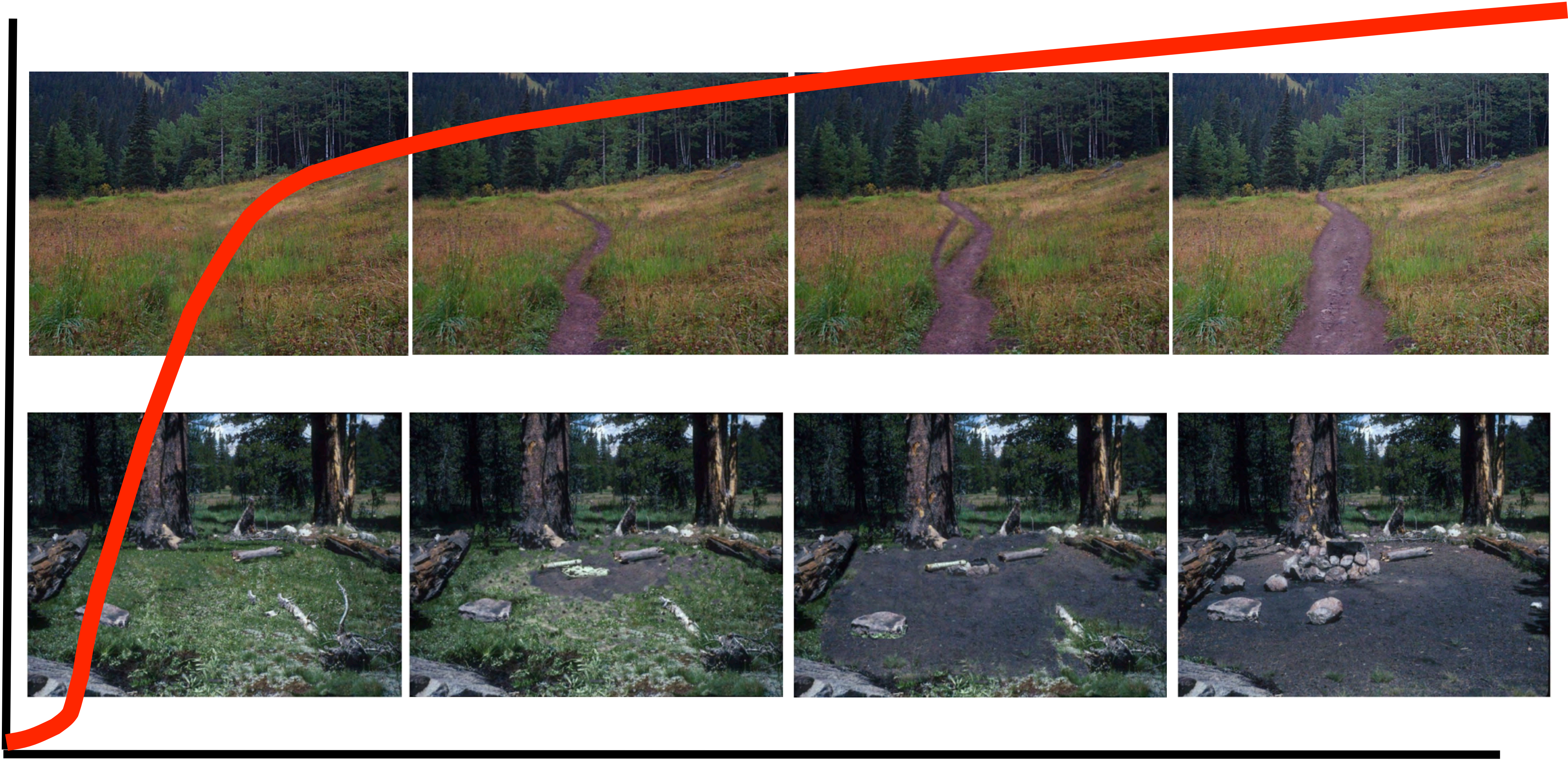


Choose The Right Path

Increased Impacts



Increased Use



Dispose of Waste Properly



- Pack it in, Pack it out
- Pack out all litter, and leftover food

- To dispose of solid human waste dig a hole 200ft or 70m away from water, camp and trails.

- Bury used toilet paper with your waste. Pack out all other hygiene products.





- Use small amounts of biodegradable soap



- Wash yourself or dishes 200ft or 70m away from streams or lakes

- Pack out all solids and scatter strained dishwater



Trash Your Trash

Leave What You Find



- Preserve the past
- Leave natural objects as you find them
- Respect property, public and private
- Avoid transporting non-native plants and animals
- Do not build rock cairns, structures, or shelters



Leave What You Find

Minimize Campfire Impacts

- Campfires can cause lasting impacts
- Use established fire rings, fire pans, or mound fires
- Use a lightweight stove for cooking
- Keep fires small. Only use sticks from the ground that can be broken by hand
- Burn campfires to ash, put out completely, then scatter cool ashes

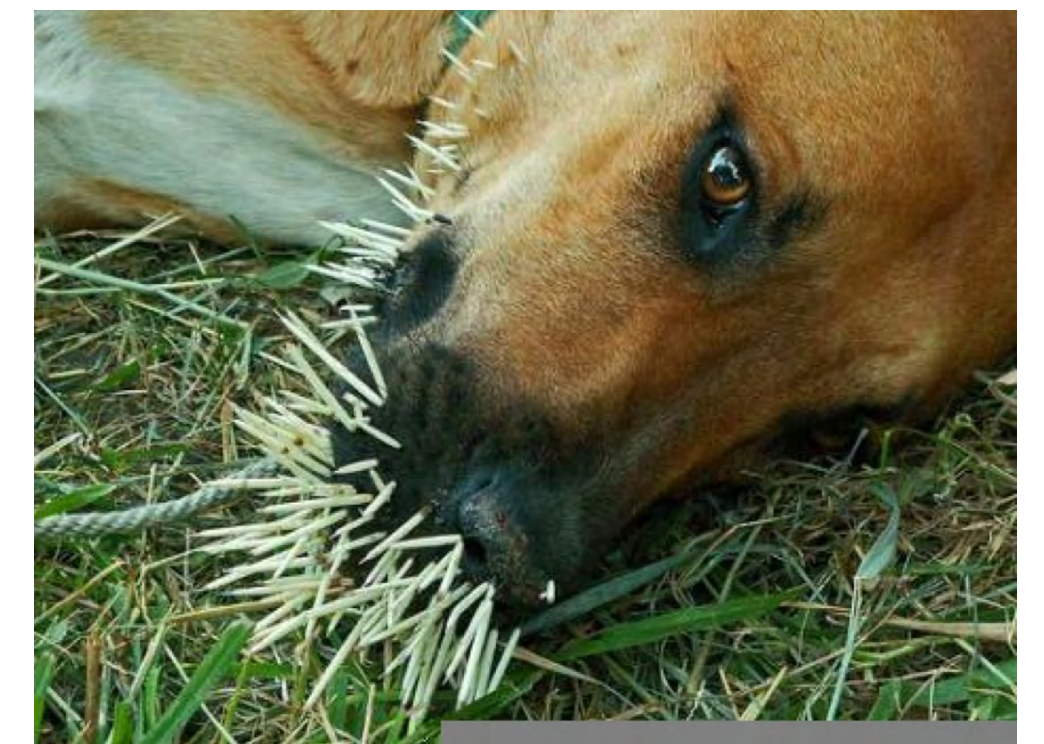


Be Careful With Fire

Respect Wildlife and Farm Animals



- Observe wildlife from a distance
- Avoid wildlife during sensitive times
- Never feed wildlife
- Store food and litter securely
- Control pets at all times
- Wildlife and farm animals are not pets



Respect Wildlife

Be Considerate of Others

- Respect other visitors
- Yield to others you encounter
- Let nature's sound prevail
- Be a respectful visitor
- Respect local customs and traditions



Be Kind to Other Visitors